



# HSL4 PAX EXPANSION ANCHOR

**Technical Datasheet**

**Update: Oct-22**



# HSL4 PAX

Ultimate-performance heavy-duty anchor

## Anchor versions



HSL4 M10 PAX85

## Benefits

- High loading capacity
- Suitable for uncracked hollow core slabs VBI A200

## Base material



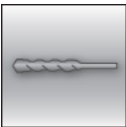
Concrete (uncracked)

## Load conditions



Static/quasi-static

## Installation conditions



Hammer drilled holes

## Basic loading data (for a single anchor):

### All data on this page applies to:

- Hollow concrete slabs VBI A200,  $f_{ck,cube} \geq 55N/mm^2$
- Correct setting according to manufacturer's IFU
- No influence of edge and spacing,  $c \geq c_{min}$ ,  $s \geq s_{min}$  (for Tension resistance)
- No influence of edge and spacing,  $c \geq 10 \cdot h_{ef}$ ,  $s \geq 3 \cdot c$  (for Shear resistance)

### Effective embedment depth

Anchor size	M10
Effective embedment depth $h_{ef}$ [mm]	$\geq 35$

### Characteristic resistance

Anchor size	M10
<b>Uncracked pre-stressed hollow core slabs (VBI A200)</b>	
Tension $N_{Rk}$ HSL4 M10 PAX85 [kN]	12,6
Shear $V_{Rk}$ HSL4 M10 PAX85 [kN]	20

### Design resistance

Anchor size			M10
Uncracked pre-stressed hollow core slabs (VBI A200)			
Tension $N_{Rd}$	HSL4 M10 PAX85	[kN]	8,4
Shear $V_{Rd}$	HSL4 M10 PAX85	[kN]	13,3

### Recommended resistance

Anchor size			M10
Uncracked pre-stressed hollow core slabs (VBI A200)			
Tension $N_{rec}$	HSL4 M10 PAX85	[kN]	6,0
Shear $V_{rec}$	HSL4 M10 PAX85	[kN]	9,5

### Materials

#### Material quality

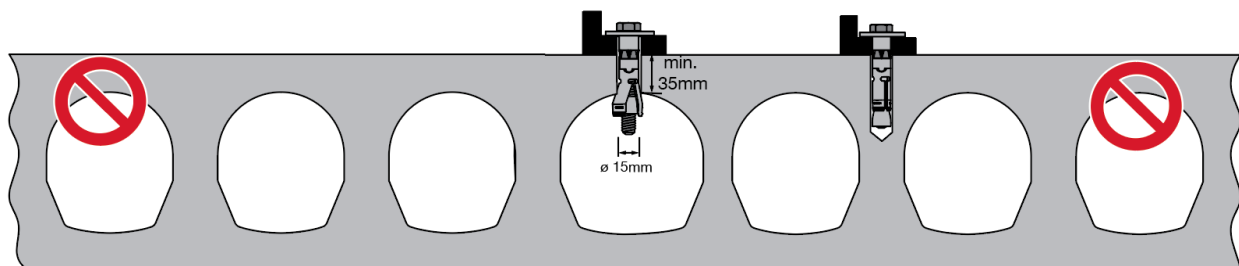
Part	Material
HSL4 M10 PAX85	Grade 8.8 acc. DIN EN ISO 898-1 galvanised to min. 5 microns

### Setting information

#### Setting details / parameters for HSL4 M10 PAX85

Anchor size			M10
Concrete flange thickness	$d_b$	[mm]	$35 \leq d_b \leq 40$
Installation torque	$T_{inst}$	[Nm]	80
Fixture thickness	$t_{fix}$	[mm]	5-15
Minimum spacing	$s_{min}$	[mm]	200
Minimum edge distance	$c_{min}$	[mm]	100 <sup>1)</sup>

Note: 1) minimum edge distance in the corner and in line to the hollow cores is 200 mm. See the figure below.





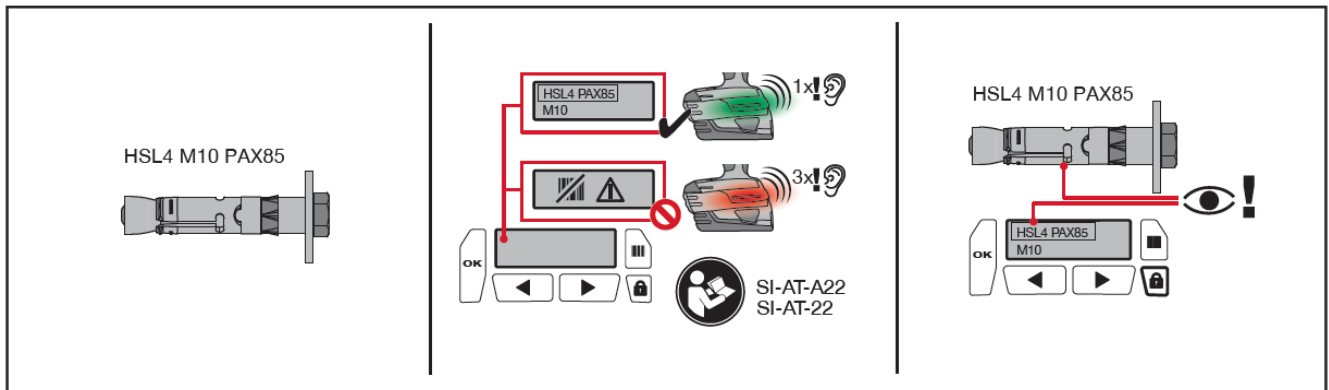
## Installation equipment

Anchor size	M10
Rotary hammer	TE 2, TE 3, TE 4, TE 6, TE 7
Setting tool	Hilti SIW 6AT 22A + SI-AT-A22 Hilti SIW 4AT-22 + SI-AT-22
Other tools	Drill bit diameter 15 mm, hammer, torque wrench

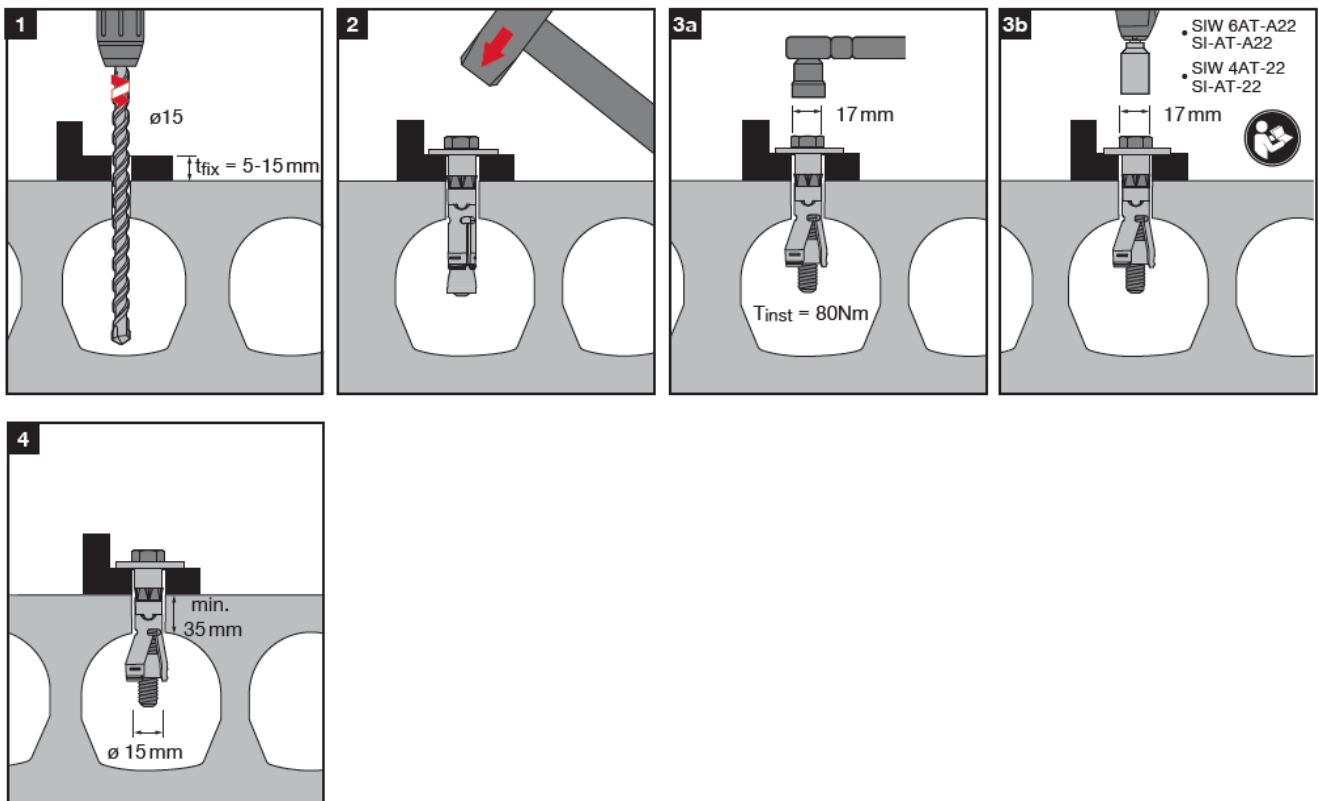
## Setting instructions

\*For detailed information on installation of HSL4 M10 PAX85 see instruction for use given with the package of the product.

### Setting instruction



### Setting



Removal

