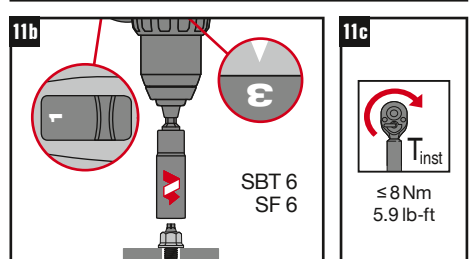
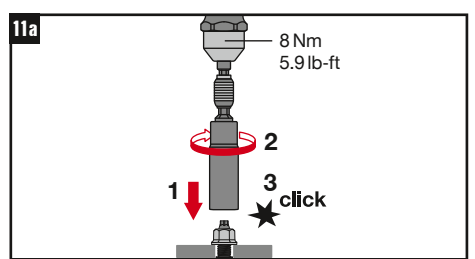
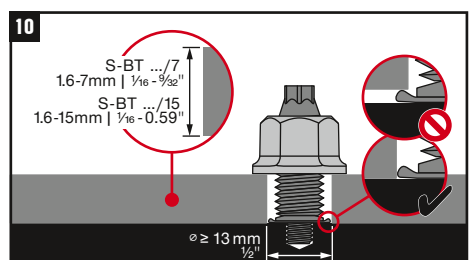
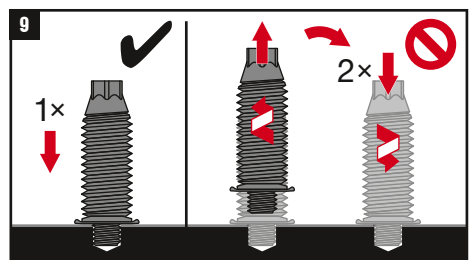
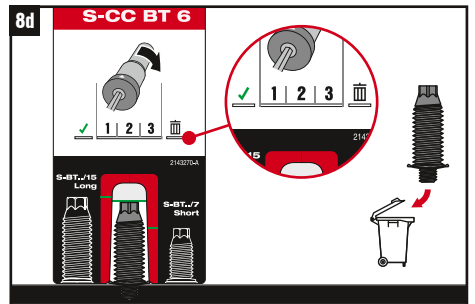
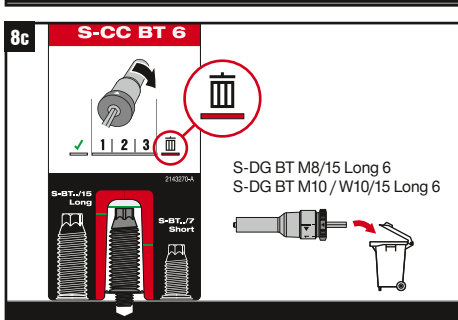
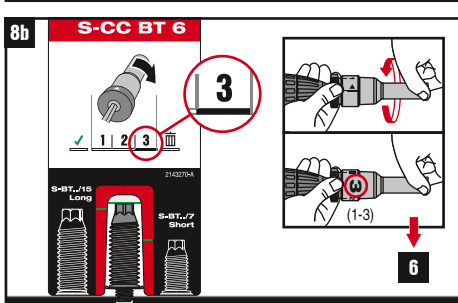
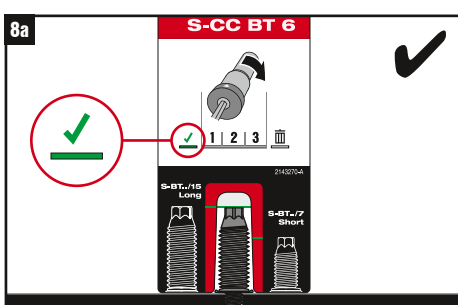
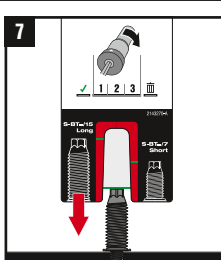
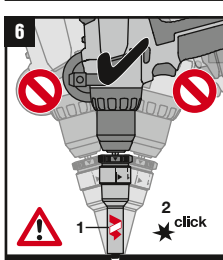
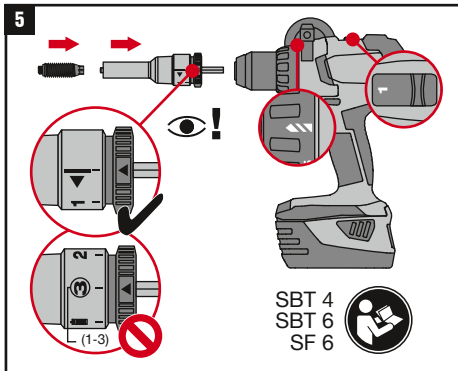
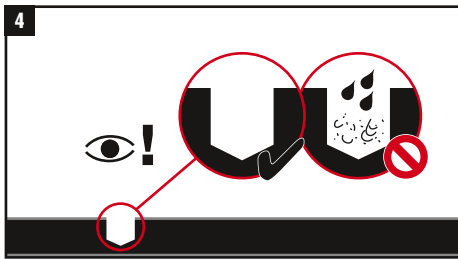
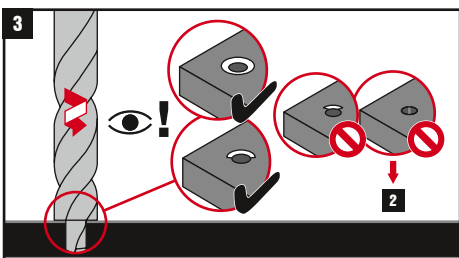
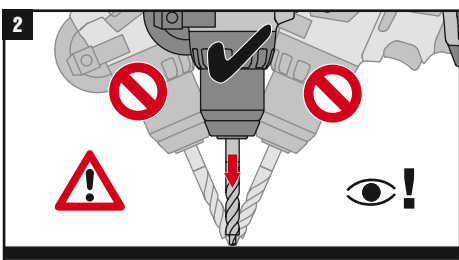
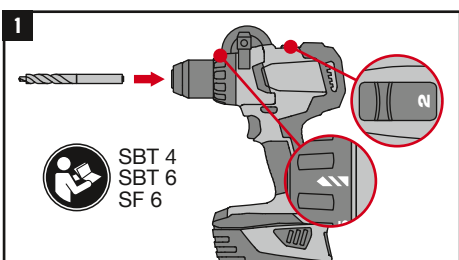
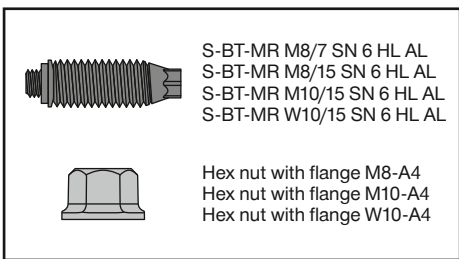
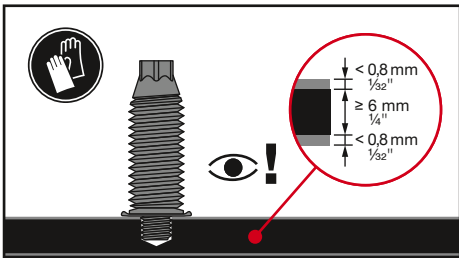
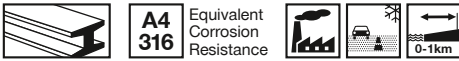


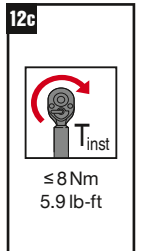
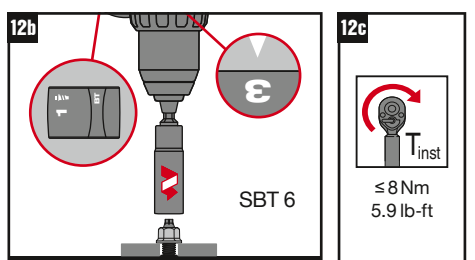
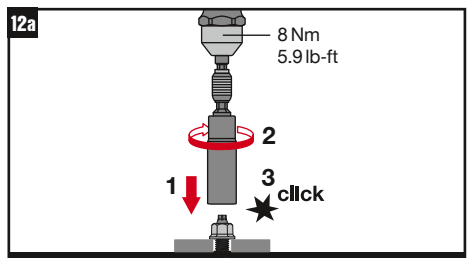
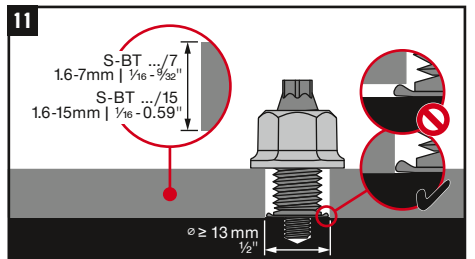
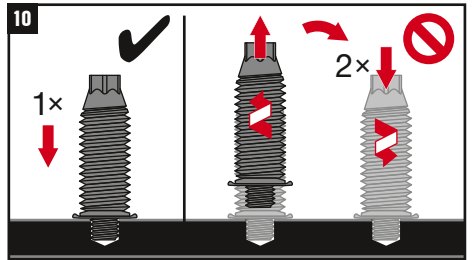
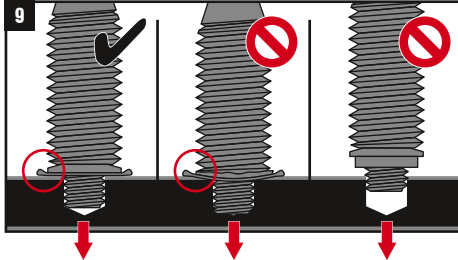
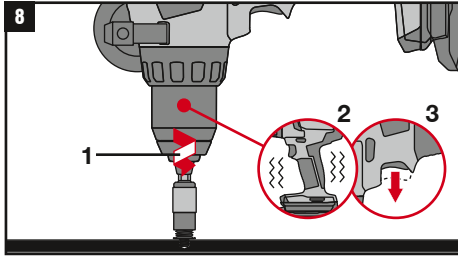
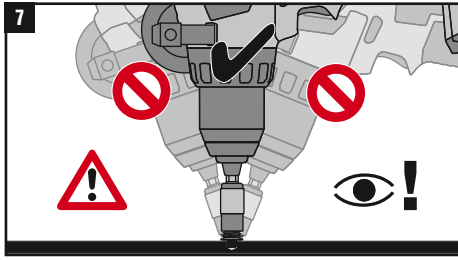
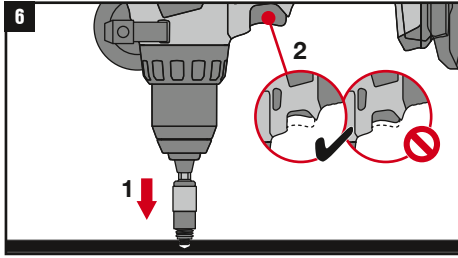
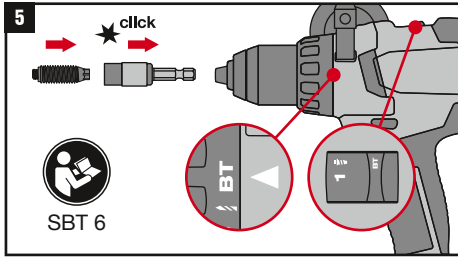
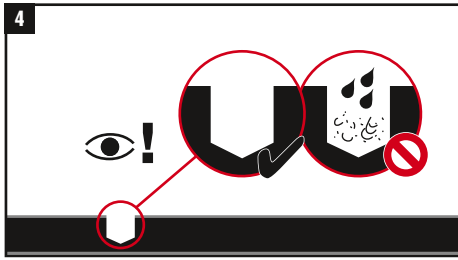
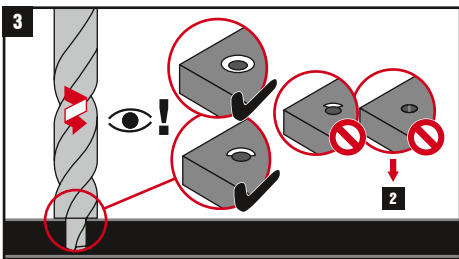
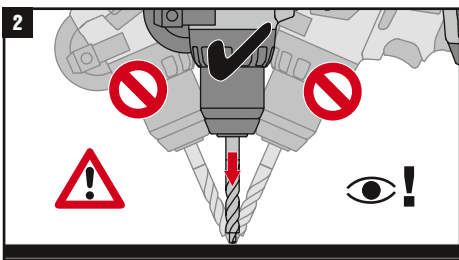
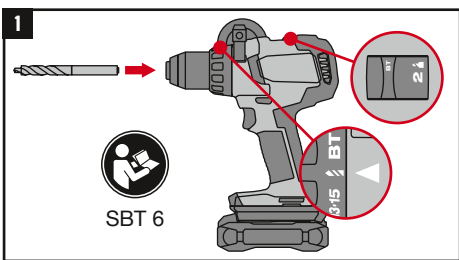
| | | |
|--|---|---------------|
| | SBT 4 | SBT 6 SF 6 |
| | TS-BT 5.5-74 AL | |
| | S-DG BT M8/15 Long 6 S-DG BT M10/W10/15 Long 6 | |
| | Torque tool X-BT 1/4" 8 Nm / 5.9 lb-ft | |
| | S-NS 13 C 95/3 1/4" (M8) S-NS 15 C 95/3 1/4" (M10) S-NS 9/16" C 95/3 1/4" (W10) | |
| | S-CC BT 6 | |



| |
|--|
| |
| 23 |
| Hilti Corporation, Feldkircherstrasse 100, FL-9494 Schaan, Liechtenstein |
| Hilti-SF-DoP-044 |
| ETA-23/0001 |
| EAD 333037-00-0602 |
| 0672-CPR |
| Threaded studs for connection of materials to structural steel and aluminium members |
| www.hilti.group |



| | |
|--|---|
| | SBT 6 |
| | TS-BT 5.5-74 AL |
| | S-SH BT M8/M10/W10 |
| | Torque tool X-BT 1/4" 8 Nm / 5.9 lb-ft |
| | S-NS 13 C 95/3 1/4" (M8) S-NS 15 C 95/3 1/4" (M10) S-NS 9/16" C 95/3 1/4" (W10) |
| | S-IC BT |



| |
|--|
| |
| 23 |
| Hilti Corporation, Feldkircherstrasse 100, FL-9494 Schaan, Liechtenstein |
| Hilti-SF-DoP-044 |
| ETA-23/0001 |
| EAD 333037-00-0602 |
| 0672-CPR |
| Threaded studs for connection of materials to structural steel and aluminium members |
| www.hilti.group |